

How to set up motion recording by using camera motion?

Purpose

The purpose of using motion recording is to save the storage space on the server; however, this also means that images will have to be analyzed, this will cause the increase of CPU consumption. Therefore, transferring the motion to be done by the camera can achieve the both goals of (1) saving disk usage and (2) maintaining moderate CPU loading.

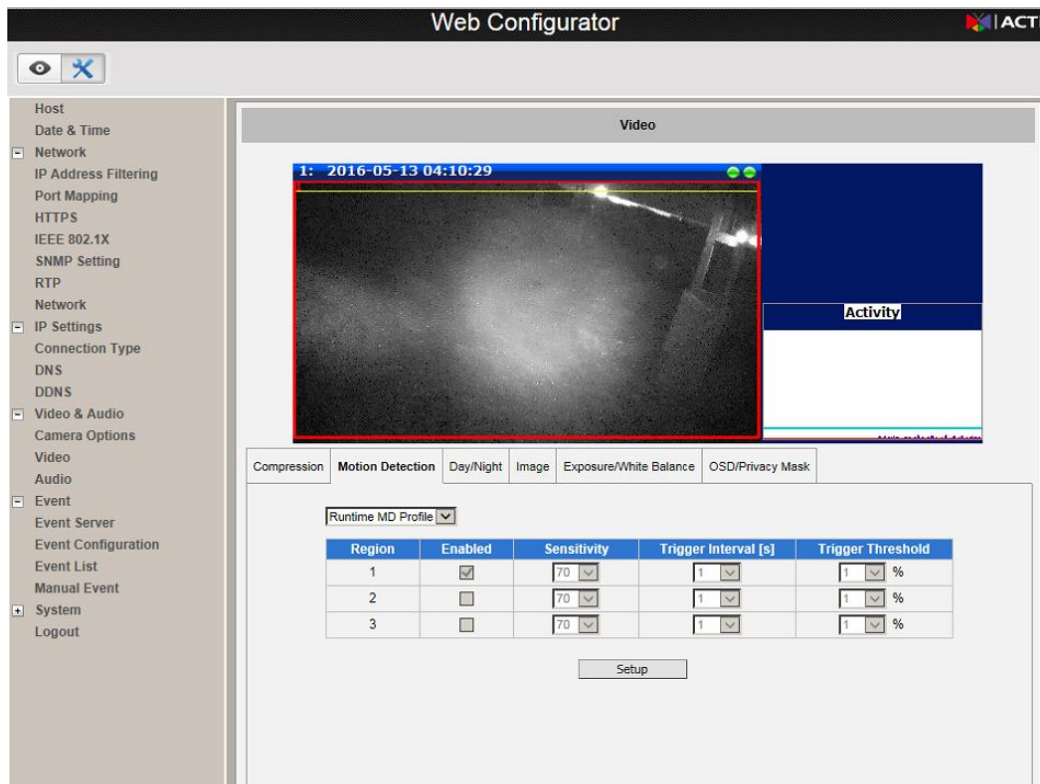
Procedures

The main things to do are

1. Set up motion on camera
2. Make sure motion can be received by Mainconsole
3. Use the motion as an event to trigger recording

Set up motion on camera

Make sure the motion detection function is enabled on the camera and it is functional.

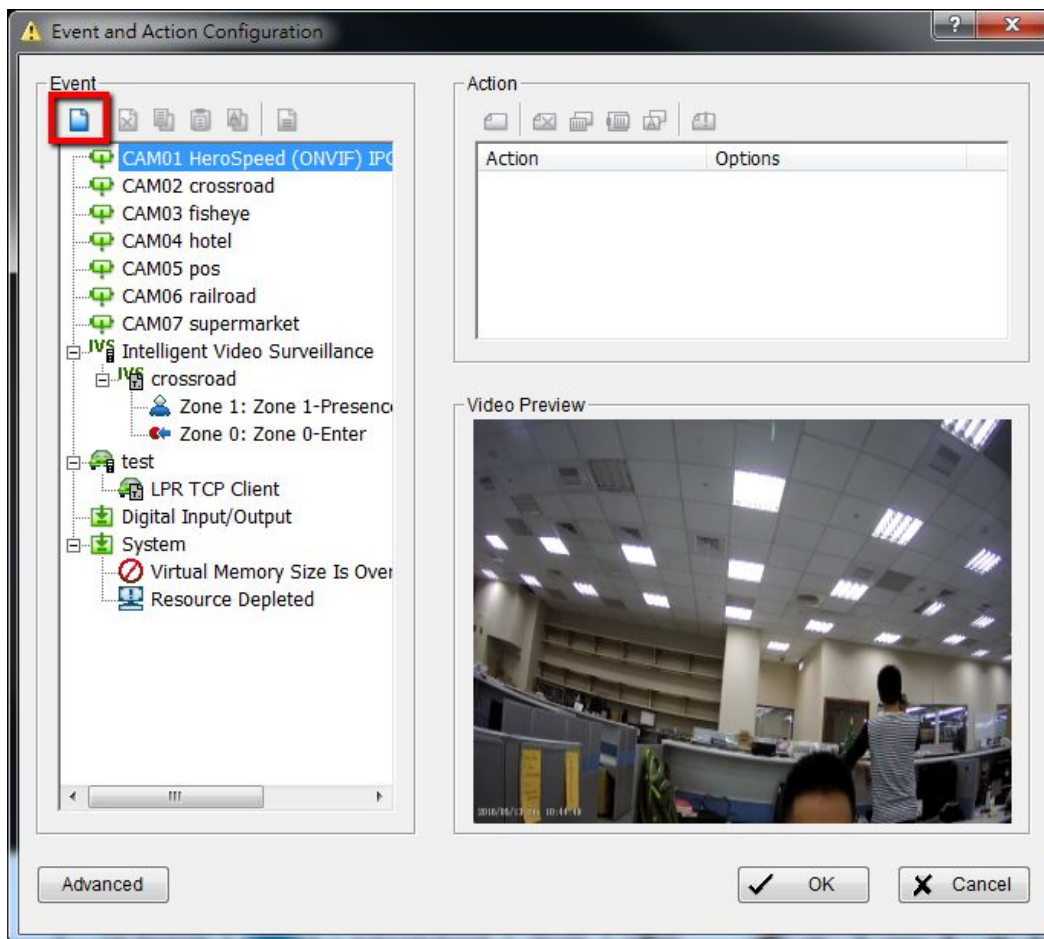


Make sure motion can be received by Mainconsole

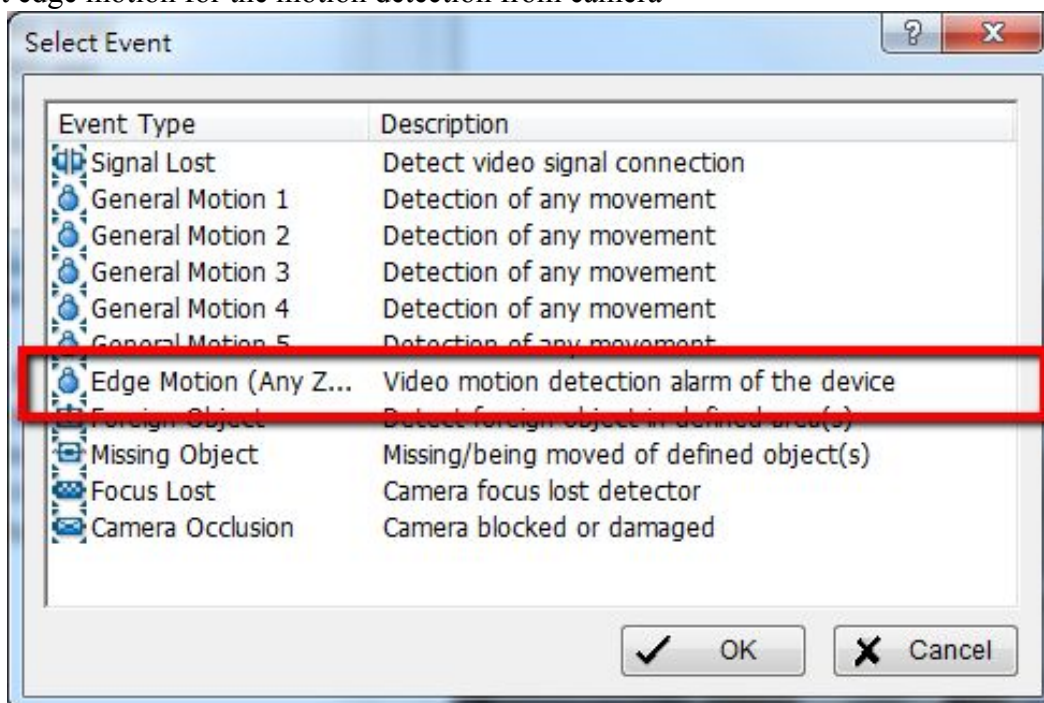
1. Enter smartguard



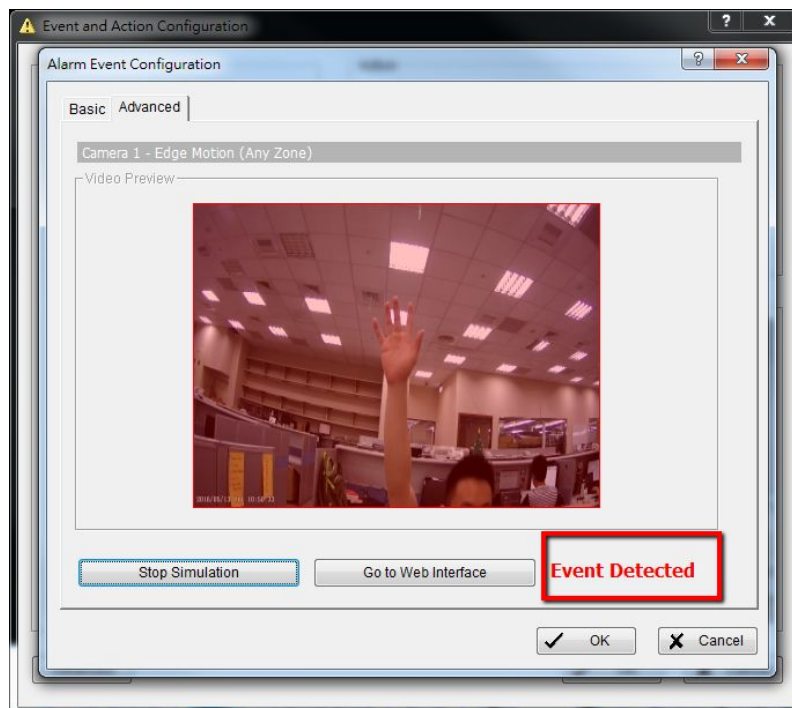
2. Add a new alarm on the desired camera



3. Select edge motion for the motion detection from camera



4. Try to simulate to see if the motion from camera can be received.



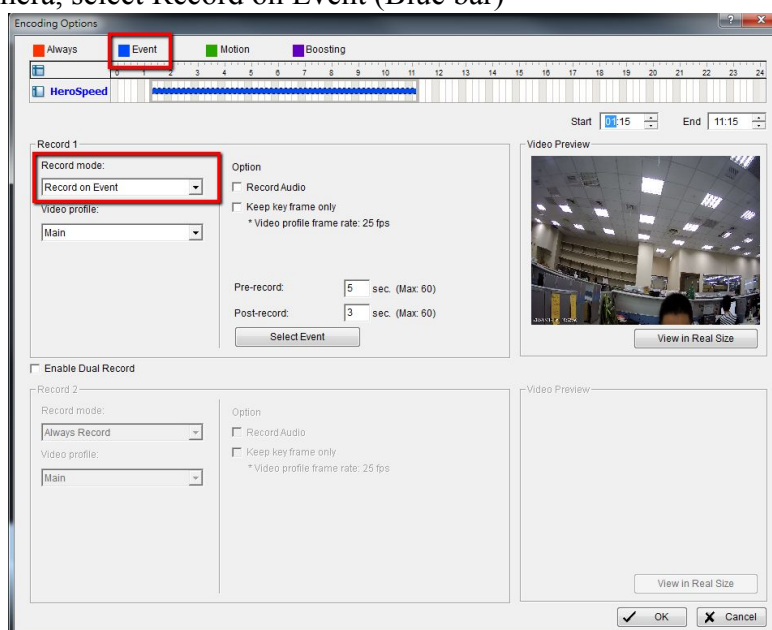
5. Click on OK to save the settings

Use the motion as an event to trigger recording

1. Enter recording schedule



2. On the same camera, select Record on Event (Blue bar)



3. Select Event

Record 1

Record mode:
Record on Event

Video profile:
Main

Option

☐ Record Audio

☐ Keep key frame only

* Video profile frame rate: 25 fps

Pre-record: 5 sec. (Max: 60)

Post-record: 3 sec. (Max: 60)

Select Event

Video Preview

Start 01:15 End 11:15

View in Real Size

4. At this point, you should be able to see the Edge Motion option under video analytics

Select Event

Smart Guard:

- CAM01 HeroSpeed (ONVIF) IPC (ONVIF)
- CAM02 crossroad
- CAM03 fisheye
- CAM04 hotel
- CAM05 pos
- CAM06 railroad
- CAM07 supermarket
- test
- LPR TCP Client

Digital Input/Output Event:

Please create Digital Input event in Smart Guard system.

Video Analytics (Device):

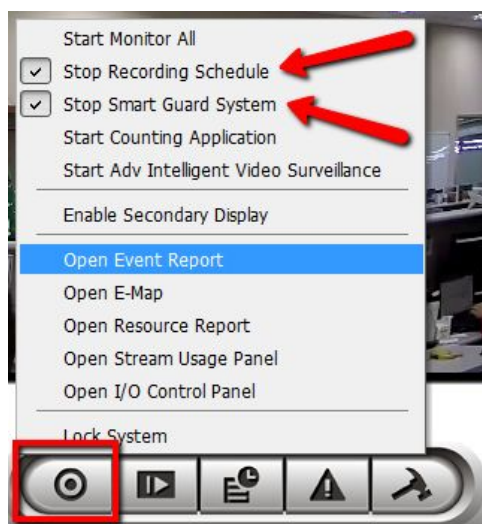
- CAM01 HeroSpeed (ONVIF) IPC (ONVIF)
 - ☒ Edge Motion (Any Zone)
- CAM02 crossroad
- CAM03 fisheye
- CAM04 hotel
- CAM05 pos
- CAM06 railroad
- CAM07 supermarket
- Intelligent Video Surveillance

OK Cancel

5. Select that and click OK to save everything

Running Record on Motion by camera

1. Start Recording Schedule and Smart Guard System



- When motion is detected and recording, the status light on the grid will turn RED. When no motion is detected, the status light is blue.

